

IDTECH MSR SERIES

Manual Swipe Magnetic Stripe Card Reader



OVERVIEW

The Universal Magnetic Swipe Reader can read Track 1 & 2 or Tracks 1,2, & 3 magnetic information with a single swipe in either direction. This reader accepts both high and low coercivity magnetic cards, and can read all ISO 7811, AAMVA and California Driver's license.

FEATURES

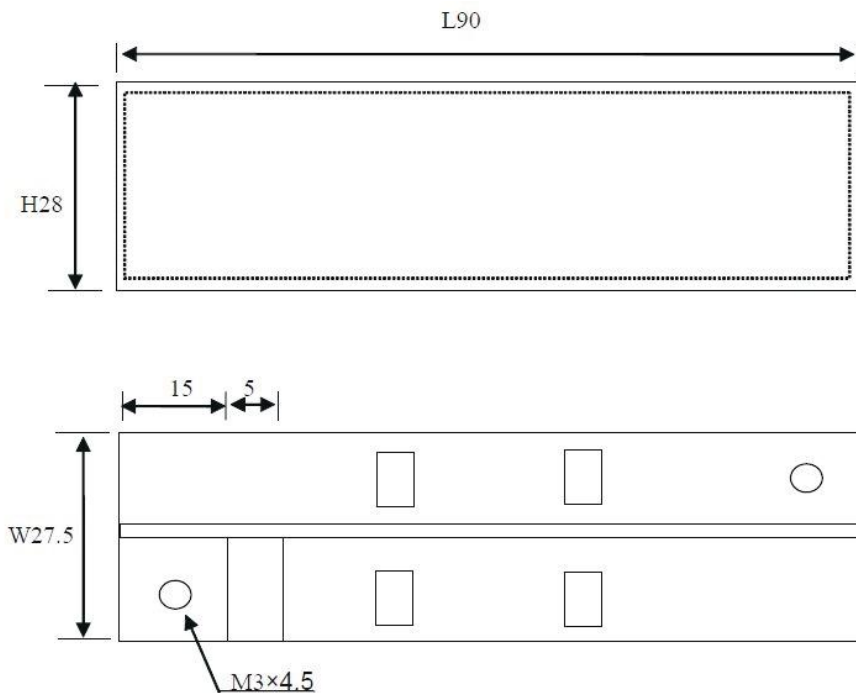
- USB/RS232C/PS/2 interface: Bi-directional card reader
- Reads credit cards, bank cards, driver's licenses and ID cards
- All tracks are available (Tracks 1, 2 and 3)
- Small in size, easy to handle
- Reads low and high coercivity cards (300 to 4000 Oe)
- LED for status
- Watch dog

Operating:

- Standards: ISO/ANSI/AAMVA/CA DMV
- Recording Method: Two-frequency coherent phase (F2F)
- Message Format: ASCII
- Card Speed: 10cm/sec. ~140cm./sec (5 ips ~55 ips)
- MTBF: Electronics - 100,000 hours: Head Life - 500,000 passes

Environment :

- Operating Temp : -10°C ~ +60°C
- Storage Temp : -20 ~ +65°C
- Humidity : 10 ~ 90 % relative



SPECIFICATIONS

Interface :

USB-keyboard:USB-serial:USB-HID
PS/2
Serial

Cable connector:

USB: standard usb
PS/2: standard PS/2
Serial: RS-232 DB9/ TTL 4pin

Dimensions :

- Size: L 90 x W 27.5 x H 28 mm
- Weight: < 250g
- Color: Black

Mounting :

- Portable or Any surface

Size: mm

